

# Customer Connection

Please visit us at [www.sce.com](http://www.sce.com)

March 2005

## Save Big Bucks With SCE's Summer Discount Plan

It's not too early to start thinking about ways to save energy and money this summer on your electric bill. Sign up now for Southern California Edison's (SCE) Summer Discount Plan and save up to \$200 during the summer months. This free program allows us to install a small remote switch on your central air conditioner, which turns off or reduces your air conditioning usage when energy supplies in the state are threatened. And there are three comfort levels to choose from: 100% off during the event, 20 minutes out of every 30 minutes, or 15 minutes out of every 30 minutes. Call us today at (800) 684-8123 or visit us at [www.sce.com](http://www.sce.com) and click on "Rebates & Savings," and "Residential."

*Armando Lujan  
Field Service  
Representative*



SOUTHERN CALIFORNIA  
**EDISON**<sup>®</sup>

An EDISON INTERNATIONAL<sup>®</sup> Company

FOR OVER 100 YEARS...LIFE. POWERED BY EDISON.



## Look Up and Live!

At SCE we strive to educate our customers about electric safety and the hazards of mixing trees and power lines. If you have trees that are growing near power lines be careful and remember to “Look Up and Live!” when working outdoors. Never trim trees near power lines or cut tree limbs that can fall on electrical wires. Do not touch a tree limb that’s resting on a power line, since it may



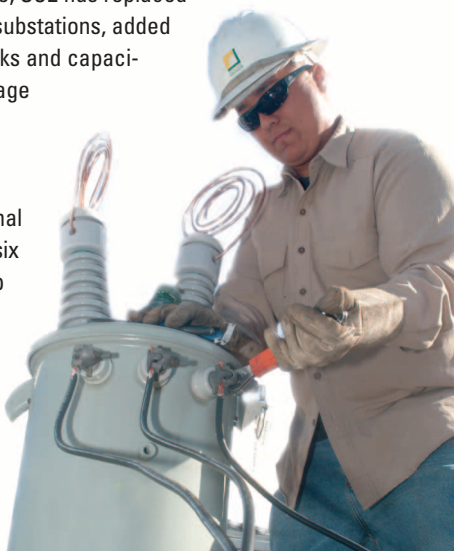
conduct electricity. Use only wood or fiberglass tree trimming equipment since metal conducts electricity and touching a power line with metal will cause serious injury or death. When in doubt, please contact a Certified Arborist, call SCE at (800) 655-4555 or visit us at [www.sce.com](http://www.sce.com) and click on “Safety,” and “Safety Tips.”

*Please visit us at: [www.sce.com](http://www.sce.com)*

# How We Keep the Power On

Our transmission and distribution system is constantly upgraded and maintained to provide safe, reliable power and to accommodate population growth in our service territory. Since the deregulation of the electric utility industry in 1998, SCE has made \$3 billion in investments to upgrade its electrical grid. For example, SCE has replaced 30,000 poles, automated 500 substations, added high-voltage transformer banks and capacitor banks, replaced high-voltage cables, and improved other aspects of the infrastructure. SCE plans to invest approximately \$11.3 billion in additional improvements over the next six years. So count on us to keep your lights on because we're here for you.

Louis Sandoval  
*Lineman, Apprentice*



# SCE.com Has a New Look

Check out [www.sce.com](http://www.sce.com) and you'll find a brand new look and feel with new capabilities. SCE directed the redesign to create a friendlier, easier-to-navigate site that guides visitors to their desired destination, while presenting customized rebate, safety and energy efficiency information. You'll find great tips for saving money whether you're a residential, business or agricultural customer. Our site also has web pages in Spanish, Chinese and Korean. With more than 900 pages, you'll find information on any question you may have about your electric service, and easy ways to pay your bill online. Visit us today!



Please visit us at: [www.sce.com](http://www.sce.com)