



April 28th, 2009

California **Solar** Initiative Public Forum
Hosted by Pacific Gas & Electric



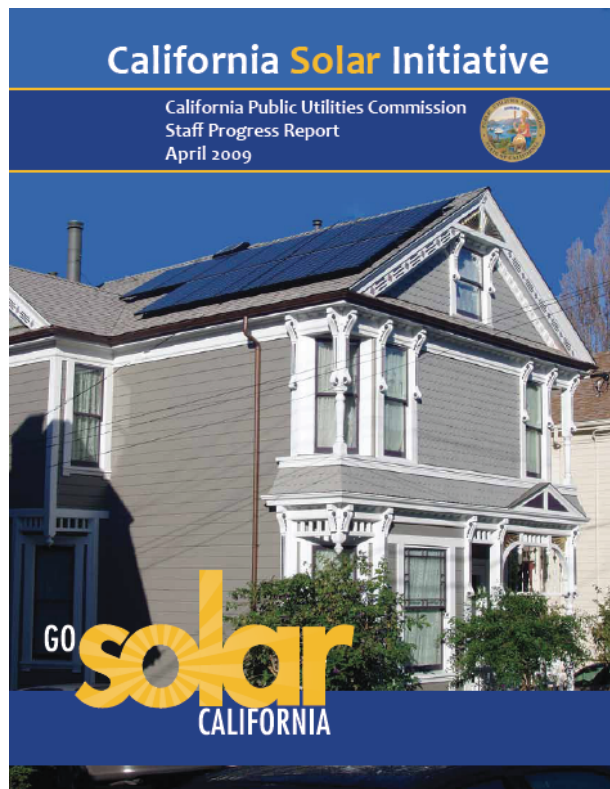
California **Solar** Initiative

CSI Program Statistics



California Solar Initiative

California Installed a Record 78 MW in Q1



- Total CSI installs in Q1 2009:
78 MW at 3,600 sites
- Total CSI installs since 2007:
211MW at 15,000 sites
- Combined total solar installs
statewide:
Over 500 MW
- New applications in Q1 2009:
52 MW (broke a record)



California **Solar** Initiative

Table 1. All CSI Projects, January 1, 2007 through April 1, 2009

All CSI Projects	
Installed Projects	
Applications	15,245
MW	211 MW
Incentive \$million	\$514
Pending Projects	
Applications	5,040
MW	145 MW
Incentive \$million	\$320
Total CSI Activity	
Applications	20,285
MW	356 MW
Incentive \$million	\$835



Source: www.CaliforniaSolarStatistics.ca.gov, April 1, 2009.

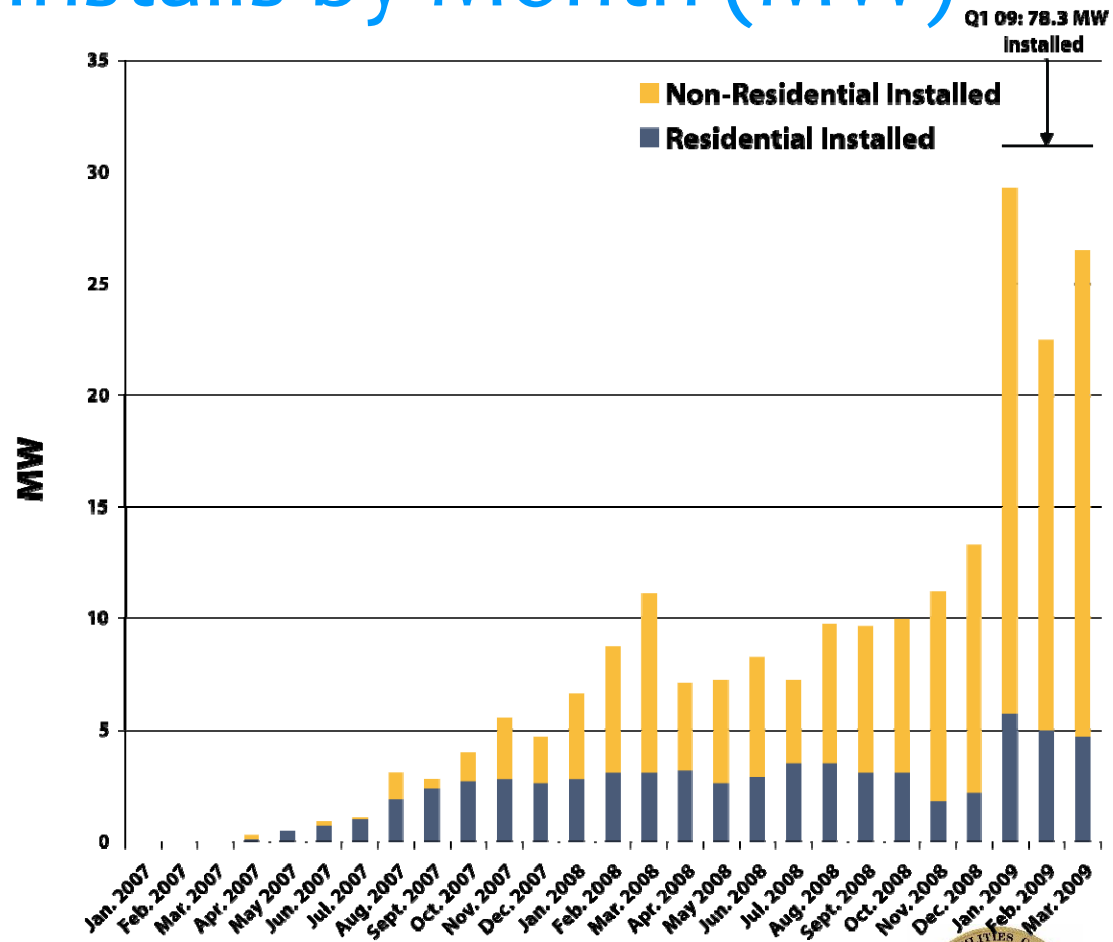


Center for Sustainable Energy
CALIFORNIA



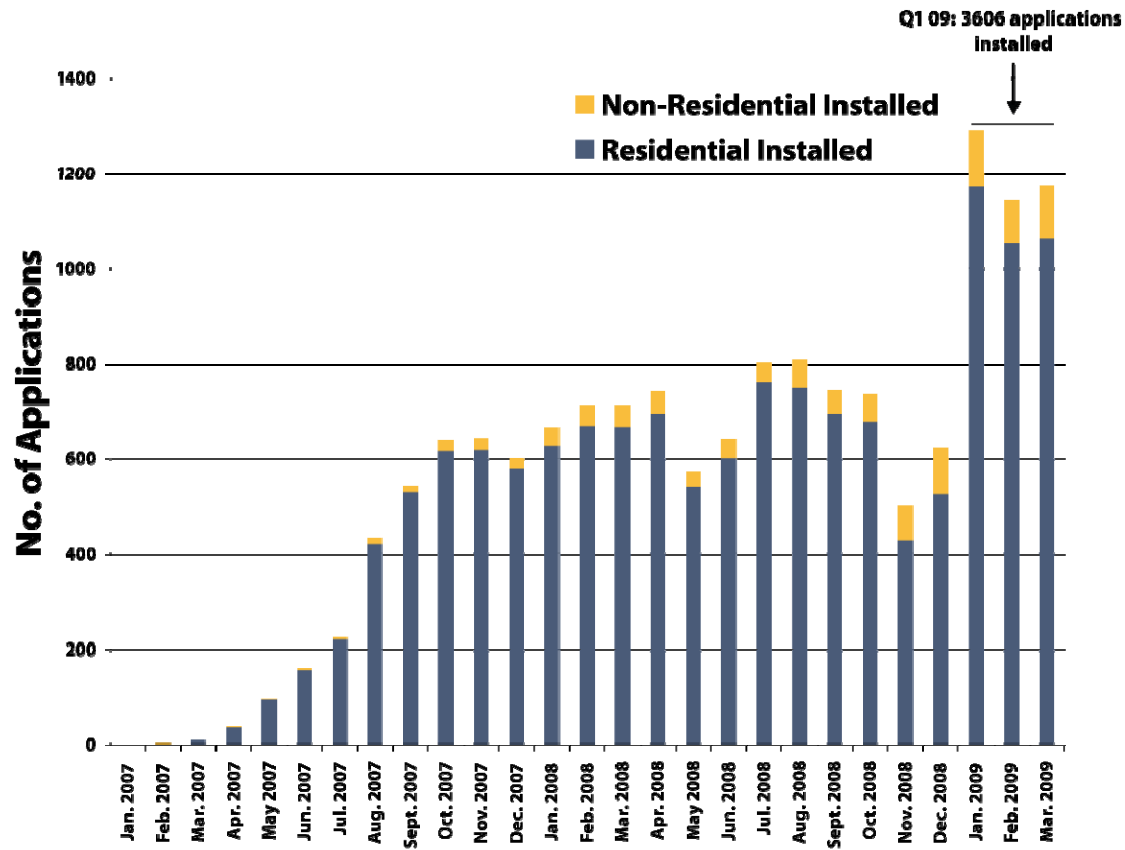
California Solar Initiative

CSI Installs by Month (MW)



California Solar Initiative

CSI Installs by Month (# of Apps)

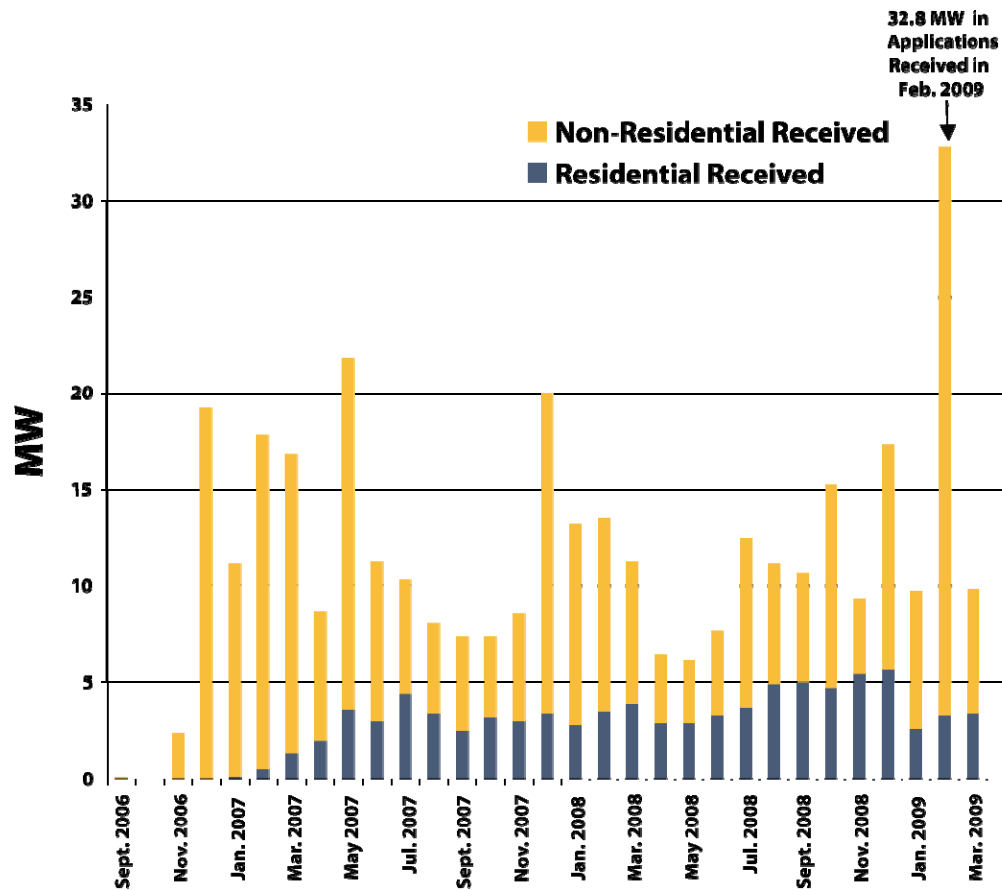


Month
Center for
Sustainable Energy
CALIFORNIA



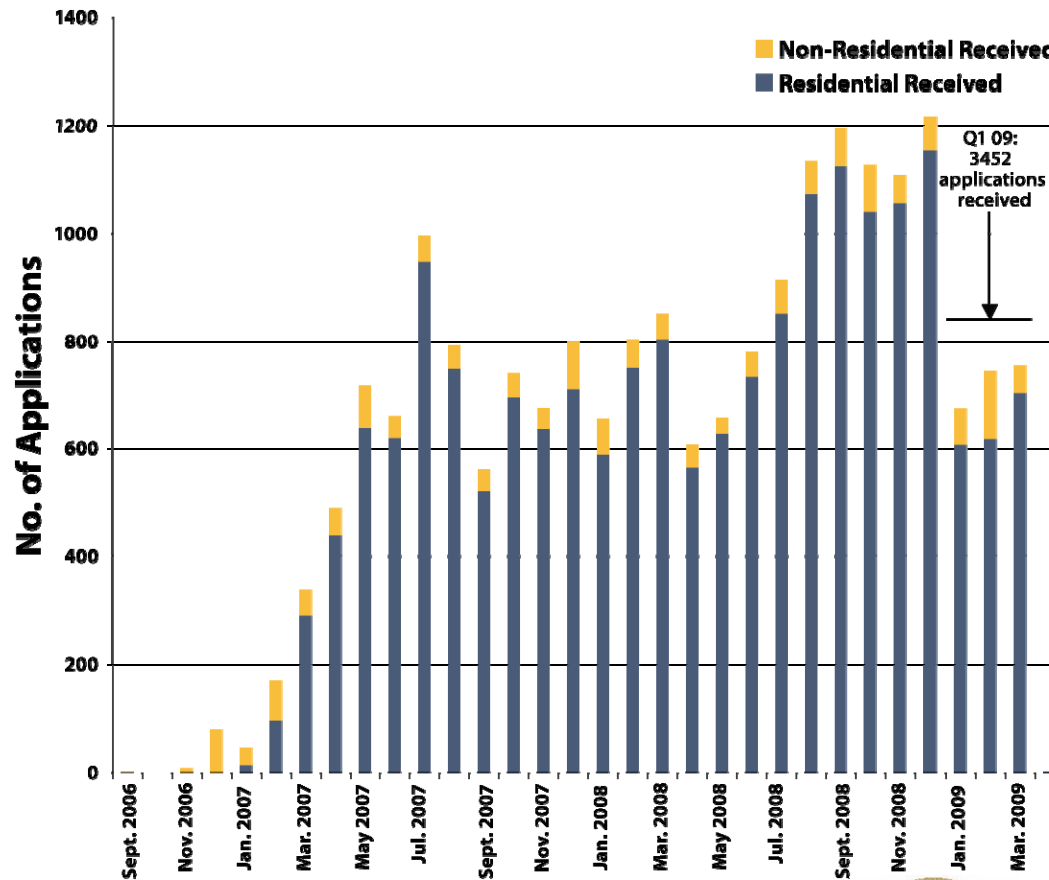
California Solar Initiative

CSI Applications by Month (MW)



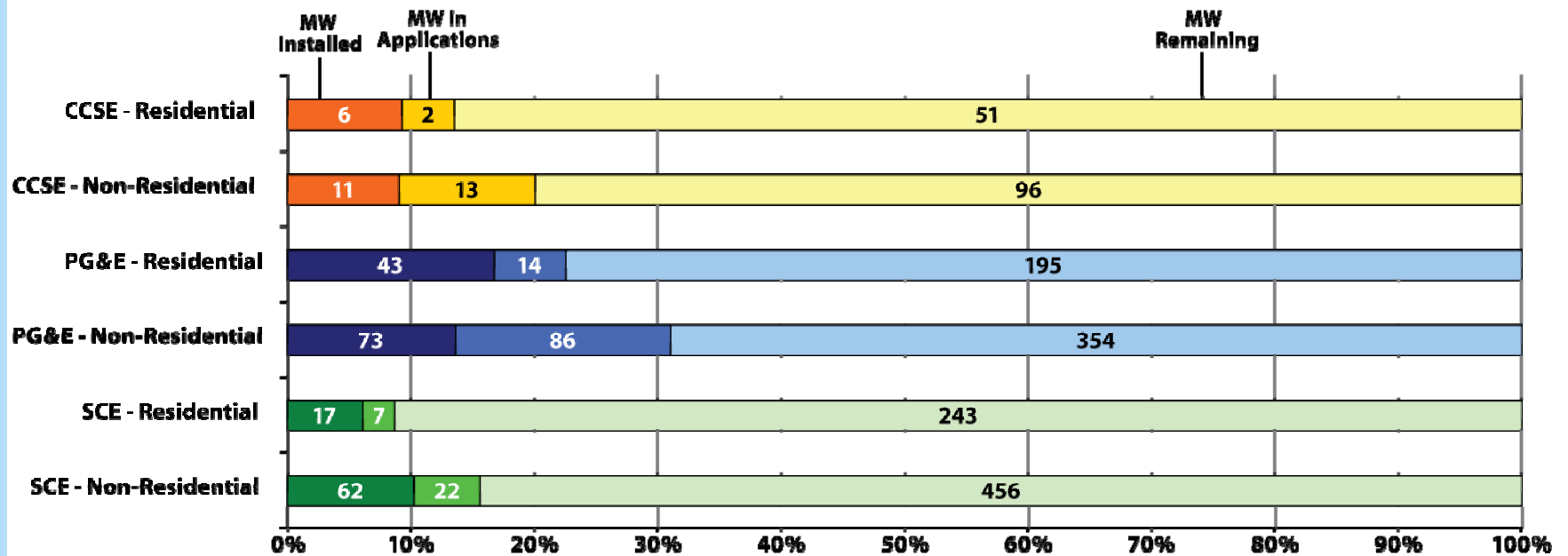
California Solar Initiative

CSI Applications by Months (# of apps)



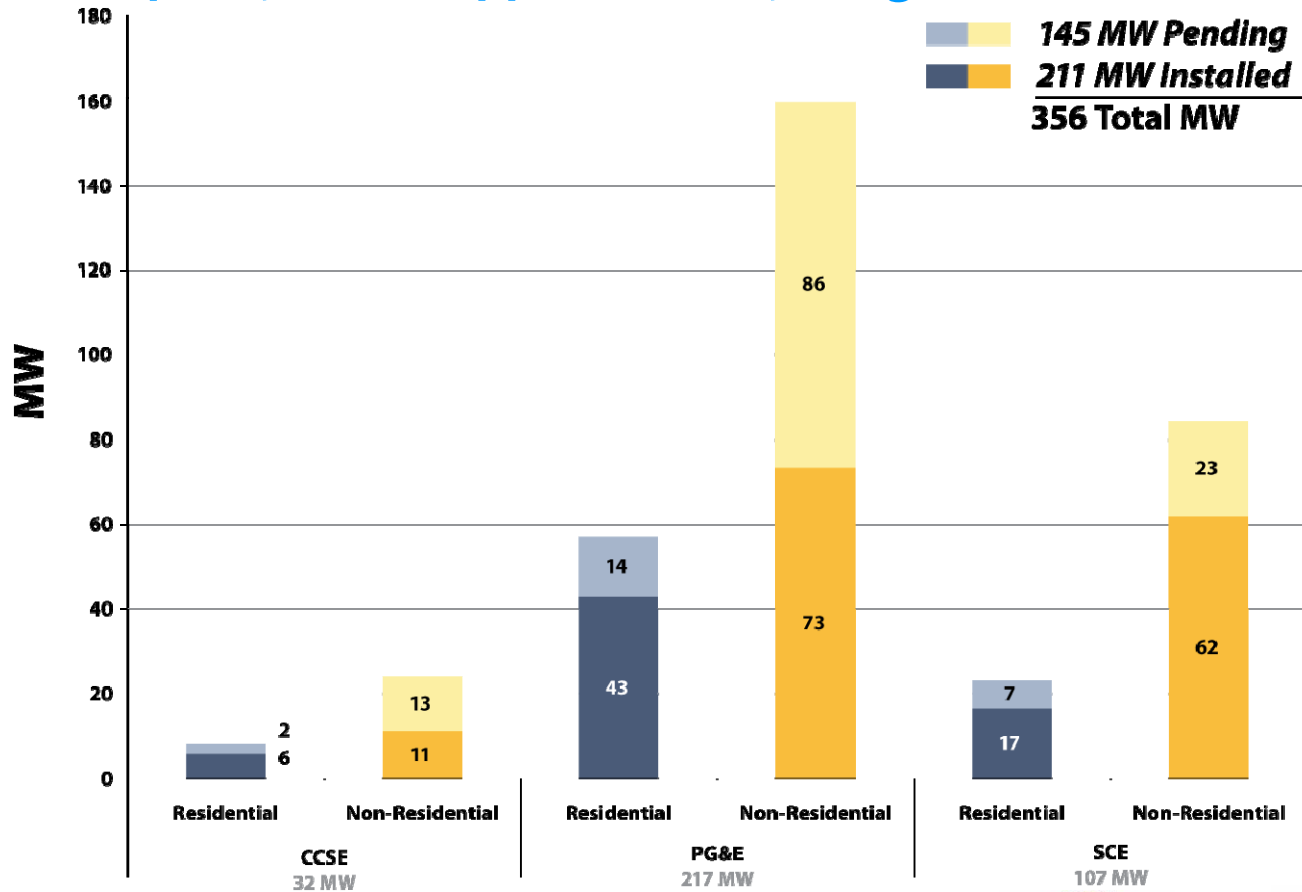
California Solar Initiative

CSI Progress Towards 1,750 MW Goal



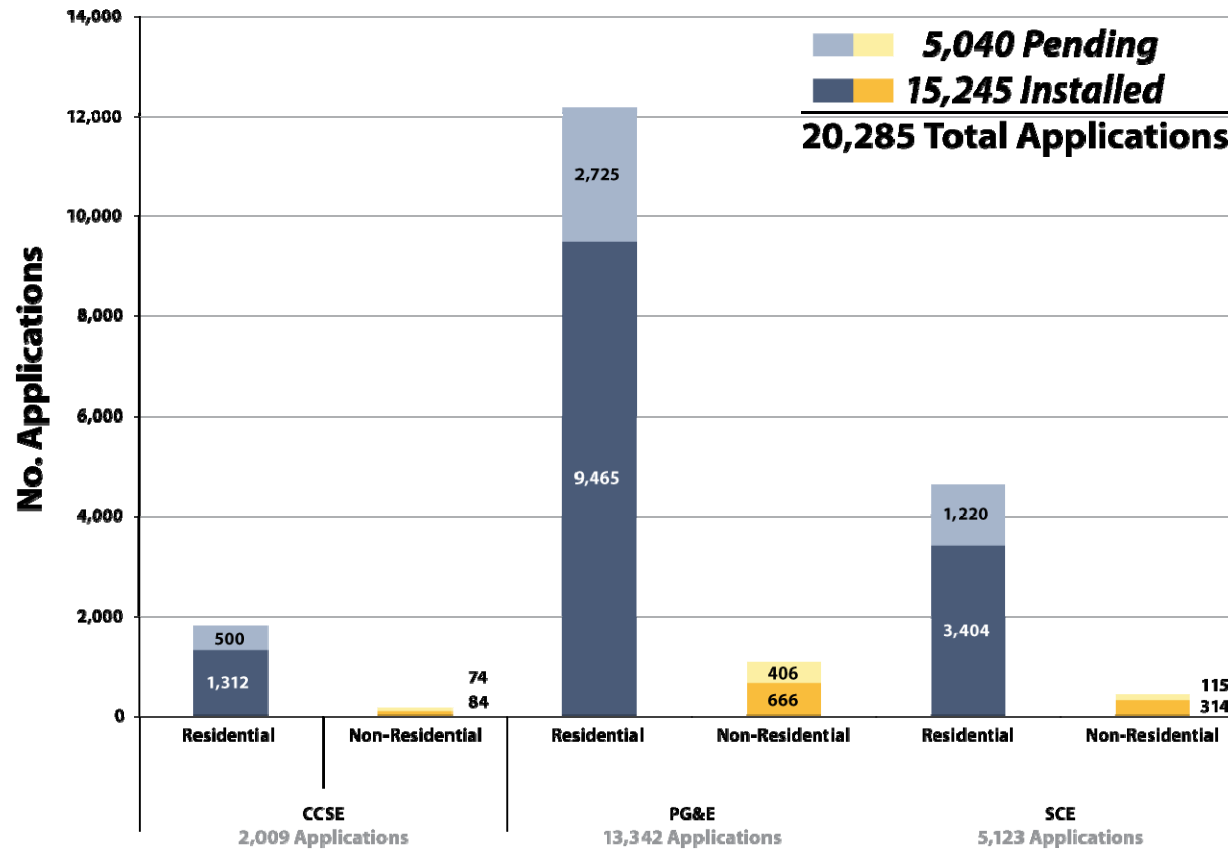
California Solar Initiative

Total Capacity of CSI Applications by Program Administrator



California Solar Initiative

Total Number of CSI Applications by Program Administrator



California Solar Initiative

CSI incentive payments and total solar project costs

Table 4. CSI Program Estimated Incentives and Total Project Costs (\$ millions), by Sector and Pending vs. Installed

	Residential		Non-Residential		Total CSI Applications	
	\$CSI Incentives	\$ Total Project Costs	\$CSI Incentives	\$ Total Project Costs	\$CSI Incentives	\$ Total Project Costs
Pending Projects						
PG&E	\$23.8	\$130.2	\$184.7	\$350.8	\$208.4	\$481.1
SCE	\$14.8	\$69.1	\$56.1	\$183.8	\$70.9	\$252.9
CCSE	\$4.4	\$21.0	\$36.7	\$105.5	\$41.1	\$126.5
Subtotal, Pending	\$43.0	\$220.3	\$277.5	\$640.1	\$320.5	\$860.4
Installed Projects						
PG&E	\$86.3	\$402.7	\$173.3	\$819.3	\$259.7	\$1,221.9
SCE	\$38.7	\$155.8	\$169.4	\$418.3	\$208.2	\$574.1
CCSE	\$13.0	\$53.5	\$33.2	\$69.7	\$46.3	\$123.1
Subtotal, Installed	\$138.1	\$611.9	\$376.0	\$1,307.2	\$514.1	\$1,919.2
Total, All Projects	\$181.1	\$832.2	\$653.5	\$1,947.4	\$834.6	\$2,779.6

Source: www.CaliforniaSolarStatistics.ca.gov, April 1, 2009.



California **Solar** Initiative

Questions and Feedback?



California **Solar** Initiative

CSI Program Improvements



California **Solar** Initiative

CEC Guideline Requirements

- What is it?
 - California Energy Commissions (CEC) guidelines for solar incentive programs in California
 - Known as Senate Bill 1 (SB1)
- Goals
 - High quality solar systems that promote highest energy production per ratepayer dollar
 - Optimal system performance during peak demand periods
 - Appropriate energy efficiency (EE) improvements where solar systems are installed
- Filed Advice Letter (AL) on March 2nd, Implement by July 1st



California Solar Initiative

Effect of CEC Guidelines on CSI

- Additional EE Measures
 - Disclosure agreement (Res and Non-res)
 - Commitment agreement (Non-Res over 100,00 sq/ft - EPBB)
 - Retrocommissioning for benchmark rating < 75
 - Over 15% of Title 24 Standards (New Construction Non-Res)
- Field Verification Measures
- Shading Measurements
 - Major corners not more than 40 ft apart
- New testing method for modules and inverters
 - Must be CEC listed
- Inverter integrated meters must be tested to $\pm 5\%$
 - Nationally Recognized Testing Laboratory (NREL)
- No Calculator Changes



California **Solar** Initiative

Status of CEC Guidelines on CSI

- Waiting for CPUC approval
- Program Administrators (PAs) working to finalize forms and agreements
- PA outreach to industry before implementation



California **Solar** Initiative

Future CSI Improvements

Goal:

- Create a paperless process and improve processing efficiency
 - Incorporate further program improvements for ease of business
 - Further clarify CSI program requirements
- ❖ **PAs looking to file AL for CSI Handbook changes by mid May**



California Solar Initiative

Removal Of...

- Original signature requirement
 - Copy, scan, or fax ok
- Utility bill
- System description worksheet
 - Questions to be added to Reservation Request Form
- AB1407
 - Incorporate language into CSI Handbook
- Project Cost Affidavit
 - Incorporate into Incentive Claim Form
- Project Cost Breakdown Worksheet
 - Incorporate into Incentive Claim Form
- Executed PMRS documentation



California **Solar** Initiative

Program Improvements...

- Allow for 1-Step application process
 - Interconnected customers only
- Lengthen Commercial expiration date to 18 months
- Remove Demand Response requirement
- Allow three 180 day extensions for schools
 - Legislative mandate
- Add CSLB suspension process
- Add Fraud Section
- Add hinge release language to meet code



California **Solar** Initiative

Clarify...

- CSI Handbook
 - Program Section and Technical Section
- “Solar Contractor” vs. “Installer”
- Incentive sector determined by customer tariff schedule



California Solar Initiative

PowerClerk Updates

Goal:

- Create a paperless process and improve processing efficiency
- Create further application transparency
- Improve data integrity

Future Additions...

- PMRS/PDP panel (4/30/09)
- NAICS code (4/30/09)
- MASH (June 2009)
- Attachment Upload (July 2009)
- Application Upload (August 2009)



California **Solar** Initiative

Upcoming PG&E Webinars

**To register –
www.pge.com/solarclasses**

- PowerClerk Update – April 29th
- CSI Handbook Improvements – April 30th
- CSI and Non-pv – May 5th
- Solar for the Entrepreneur – May 8th
- SGIP Overview – May 11th
- Solar and Energy Efficiency – May 12th
- New Solar Homes – May 19th
- Solar – System-life Maintenance – June 8th

****All webinars are free of charge*



California **Solar** Initiative

Simplified CSI Calculator



California **Solar** Initiative

Agenda

- Background on Calculator
- Review of proposed calculator
- Rationale on proposed change
- Next steps



California **Solar** Initiative

Background

- CSI calculator must pay incentives based on Expected Performance
 - Founded in SB1
 - Supported by CPUC Decision
 - Elaborated upon by CEC



California **Solar** Initiative

Background

- CEC issued “Guidelines” document for all Solar Programs
 - Calculator must be based on 15 performance metrics
 - Time Dependent Valuations (TDV)
 - Climate Zones
 - Others



California **Solar** Initiative

Background

- CEC Issued Report comparing EPBB calculator and NSHP (CEC PV) Calculator
 - Preferred greater specificity with CEC PV incentive results



California **Solar** Initiative

Background

- Final Guidelines provided Exemption for CSI calculator

“...(CEC) strongly encourages the CPUC’s CSI program to upgrade its current methods for estimating the expected performance of solar electric generating systems....”



California **Solar** Initiative

Proposed Calculator

- See v3.3



California Solar Initiative

Rationale

- Results are based on TDV weighted impacts
 - Proposed method provides results similar to CEC PV calculator for most applications
- Calculator built using several thousand CEC PV calculator runs
- Incorporates CEC Shading impact
 - Uses Weighed Shade Values as determined by the CSI Shading Subcommittee
- Empower solar stakeholders
 - All calculations are based on lookup tables.
 - Results can be calculated by hand if desired.
 - Impacts of design selections known before running the calculator.



California **Solar** Initiative

Next Steps

- Focus Groups
- Incremental Improvements
 - Handling Tilts greater than 43 degrees
 - kWh Estimation (if desired)
 - Usability
- Itemizing necessary changes for statewide database
- Filing Advice Letter and vetting through public process



California **Solar** Initiative

Questions and Feedback?



California **Solar** Initiative

Single-Family Affordable Solar Housing (SASH)



- GRID Alternatives, a solar non-profit, is the Program Manager (Contract was finalized in December 2008)
- GRID submitted CSI Program Handbook changes in March 2009, approved by CPUC
- GRID now accepting applications

<http://www.gridalternatives.org/>



California **Solar** Initiative

Questions and Feedback?



California **Solar** Initiative

Contractors' State Licensing Board



California **Solar** Initiative

General Updates



California **Solar** Initiative

New California Energy Commission Solar Contractor List

- **New Feature Update**
- **Looking for your feedback**

www.gosolarcalifornia.org/retailers/index.html



California **Solar** Initiative

Solar Water Heating Pilot Program (SWHPP)



- CCSE issued SWHPP Interim Evaluation Report in January 2009
- CCSE released Evaluation Report's "Cost-Effectiveness Appendix" on April 1, 2009
- The Evaluation Report will serve to inform the CPUC in the development of a program under Assembly Bill 1470 (AB 1470)

California Solar Initiative

Multifamily Affordable Solar Housing (MASH)

- February 2009: PG&E, SCE, and CCSE began accepting applications for the MASH program for Track 1 incentives.
 - Track 1 provides fixed, up-front capacity based incentives
- The PA's filed Advice Letters to include Track 2 incentives and Virtual Net Metering in MASH program
 - Track 2 provides higher incentives through a competitive bidding process
 - Virtual Net Metering allows participants to apply credits from a single solar system to multiple accounts.
- The Advice Letters are currently under review at the CPUC



California Solar Initiative

CPUC PV Cost Workshop

- March 13th, 2009
- >50 Attendees + phone participants
- Informal, staff driven workshop to address two questions:
 - How do CPUC and CSI Program Administrators collect and use PV system cost information?
 - How can the CSI Program bring down the installed cost of solar? Has there been an effect so far?



California Solar Initiative

PV Cost Workshop- Takeaways

- Panel/Inverter Market is global
 - Hard for CSI to drive down costs
- BOS/Installation/Admin is local
 - Application and Reporting process
 - Cycle time (permitting, interconnects, inspections)
 - Permitting costs
 - Financing



California Solar Initiative

PV Cost Workshop – Next Steps

- Consider Eliminating or Simplifying Cost Breakdown Worksheet
 - Ask for what we report.
 - Add relevant PowerClerk fields to Application?
- Reduce Cycle time through streamlining
 - Integration of CSI application with interconnection application
 - Integration of CSI Inspection with Interconnection inspection
 - Introduction of one-step application
- Address Permitting Costs
 - Statewide database of permitting requirements in local jurisdictions
 - Harmonization/Standardization of fees and requirements
 - Partner with CALSEIA/SolarTech
- Align M&E with data collection already done by solar installers



California **Solar** Initiative

Questions and Feedback?

